



Designed for  
350 cups  
per day



GOURMET COFFEE SPECIALITIES,  
INDIVIDUALLY SERVED TO PERFECTION.



WMF 9000 S+

DESIGNED TO PERFORM

[wmf.com](http://wmf.com)



## TECHNICAL SPECIFICATIONS

Recommended for an average daily requirement of*	350 cups	
Nominal power rating / mains power connection	3.4 - 3.8 kW / 220 - 240 V	6.0 - 7.0 kW / 380 - 410 V
Output per hour according to DIN 18873-2		
Espresso / 2 espressi	150 / 242 cups	
Café crème / 2 café crèmes	130 / 152 cups	
Cappuccino / 2 cappuccinos	150 / 238 cups	
Hot milk beverages / hot milk foam beverages	✓	
Cold milk beverages / cold milk foam beverages	✓	
Total hot water output / hour	120 cups / 190 cups	
Energy loss per day according to DIN 18873-2	2.59 kWh	
Coffee bean hoppers	Large rear approx. 1200 g, small front approx. 700 g	
Choc or topping hopper	Approx. 1200 g	
External dimensions (width / height** / depth)	390 / 744 / 598 mm	
Water supply	Fixed water supply	
Empty weight (depending on the model)	Approx. 67 kg	
Continuous sound pressure level (LpA)***	< 70 dB(A)	

\* Output is determined using a machine with constant water supply and is dependent on cup size, quality settings, spout, model and nominal power rating. The recommended maximum daily capacity is based on our catalogued service concept. However, these average values serve merely as a guideline. Let our trained WMF team match the ideal coffee machine design to your specific needs.

\*\* Height including coffee bean hoppers.

\*\*\* The A-rated sound pressure level LpA (slow) and LpA (impulse) at operating personnel work stations is under 70 dB(A) in any operating mode. Above 55 dB(A) (carbonic hardness), a WMF water filter must be fitted.

Available with the following milk and steam systems:

	EASY STEAM	AUTO STEAM
DYNAMIC MILK	✓	✓

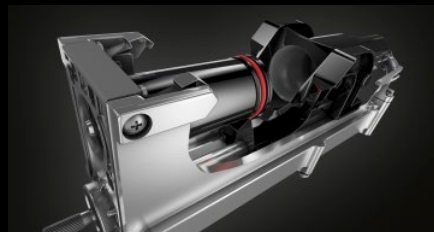
### DYNAMIC COFFEE ASSIST

This intelligent technology continuously monitors the factors that determine coffee quality, including ground coffee quantity and grinding degree, automatically adjusting them to guarantee the perfect extraction time for consistently high quality of the espresso.



### INTUITIVE MENU SYSTEM

The WMF 9000 S+ immediately invites interaction with its attractive 10" colour touch display. Navigation is intuitive, using familiar touch and swipe menus, with both served and self-service modes available.



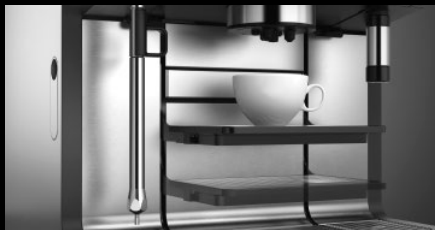
### HEAVY-DUTY BREWER

The heavy-duty, stainless steel brewer is made in Germany with hardwearing components to guarantee you high performance and maximum reliability over many years of service.



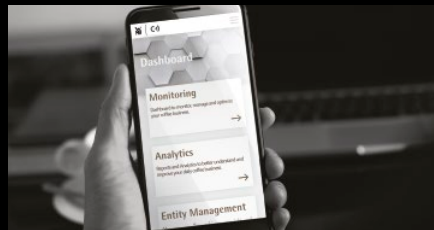
### UP TO 4 COFFEE GRINDERS

The high-performance, electronically controlled, stainless steel grinders are finely tuned and robustly built for a long service life, as well as being quick and remarkably quiet.



### HEIGHT-ADJUSTING CUP TABLE

The cup table automatically moves upwards towards the fixed spout depending on the beverage and setting, ensuring perfect clearance for any type of cup. So beverage temperature remains perfect, and unsightly splashes of milk are eliminated.



### WMF COFFEE CONNECT

By collecting, analysing and processing data from your machine, WMF CoffeeConnect gives you the power to optimise processes, reduce service costs, and increase turnover.



### WMF ACCESSORY EQUIPMENT

WMF accessory equipment is designed to optimise beverage quality and reduce the daily workload in both served and self-service venues. Options include attractive cup warming racks and milk coolers, combination Cup&Cool units, a syrup station, cup dispensers, payment devices, mobile coffee stations and more.